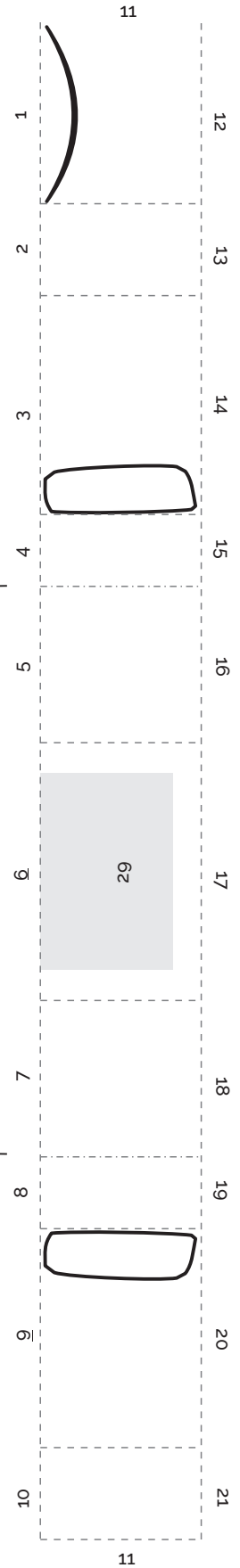
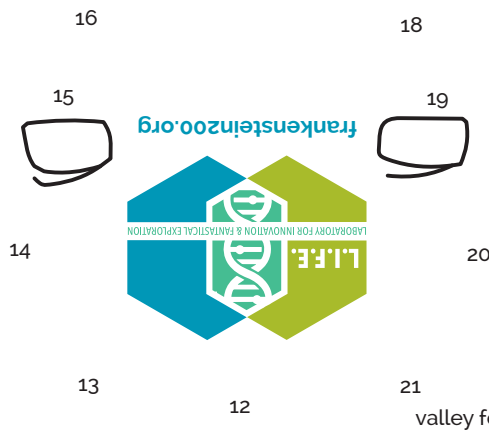
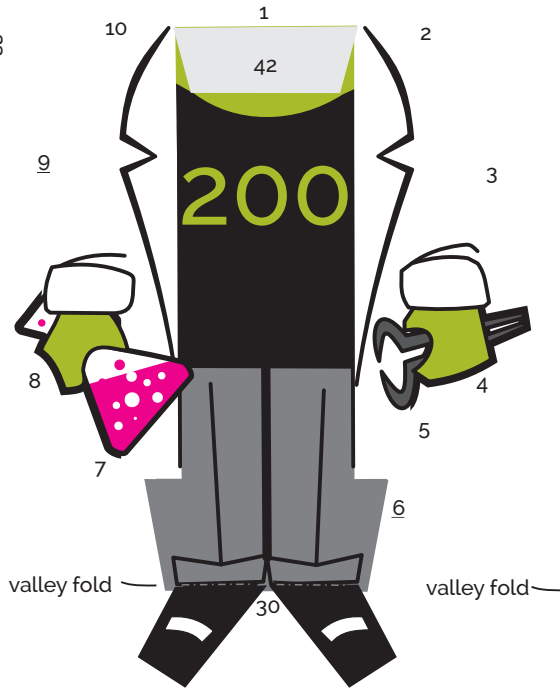
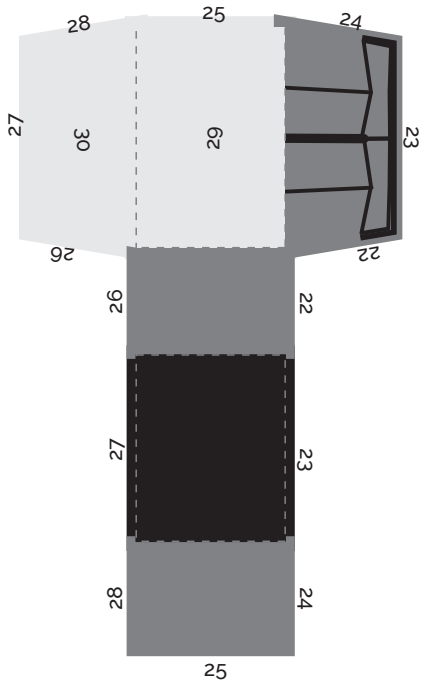
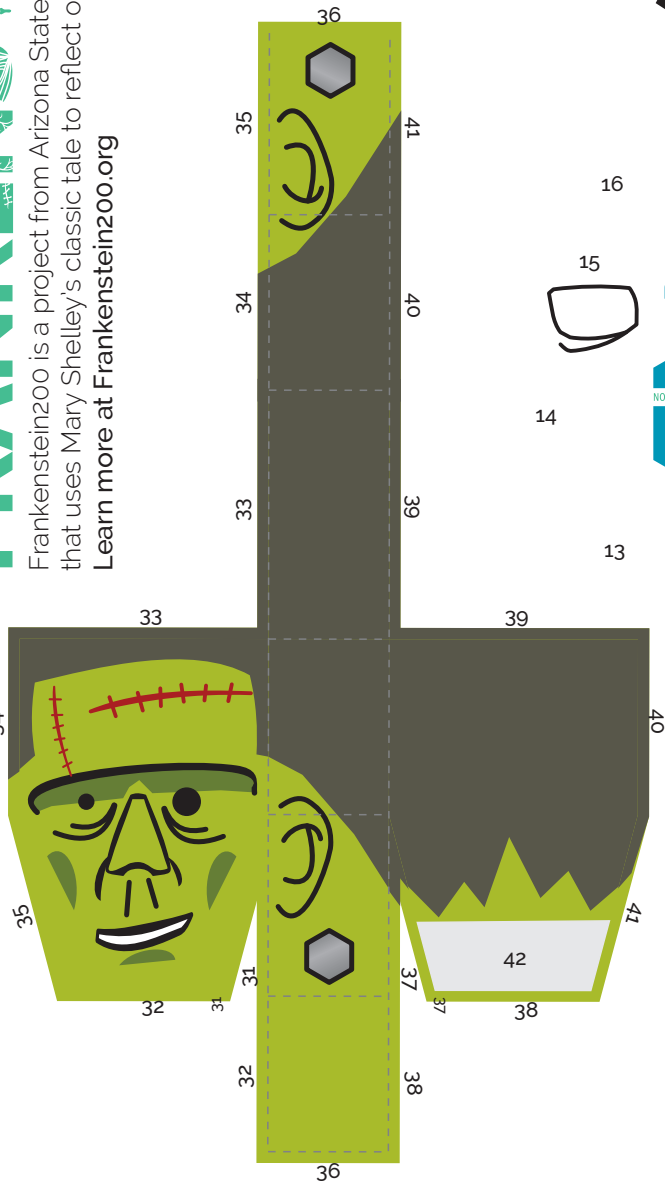


FRANKENSTEIN 200

Frankenstein200 is a project from Arizona State University and the National Science Foundation that uses Mary Shelley's classic tale to reflect on modern science and emerging technologies.

Learn more at Frankenstein200.org



Using liquid glue (not a glue stick), glue flaps in numbered sequence. All folds are mountain folds, except for the four folds labeled as valley folds.

Start with the upper body. #22 - #30 are the back of the legs, glue them behind and below the main body.

As the last step, glue the head to the upper body at #42.

DR. FRANKENSTEIN NEEDS YOUR BRAIN!*

Join



As one of Dr. Frankenstein's lab assistants, you'll perform experiments, explore hidden areas of science, and assist a pair of young researchers to unravel the mystery of what makes us human.

Learn more and begin your
experience today at
Frankenstein.life
#ComeToLIFE

*No grave robbing or electrocution required



This material is based upon work supported by the National Science Foundation under grant number 1516684. Any opinions, findings, and conclusions or recommendations expressed in this material are those of the author(s) and do not necessarily reflect the views of the National Science Foundation.